



C-Band Receive Reject Filters

Model 16495 - Extended Band

Model 16495-1 - Super-Extended Band

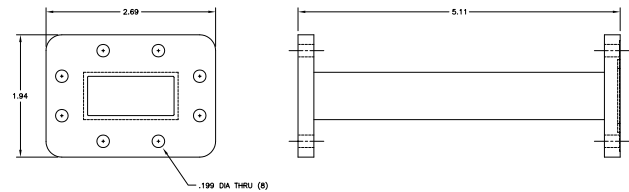
These uplink (transmit) filters provide superior isolation from the downlink (receive) band with minimal effect on transmission.

Specifications:

Passband: 5.85 - 6.425 GHz (*model 16495*)
5.85 - 6.725 GHz (*model 16495-1*)

Common Specifications:

Insertion Loss: < 0.1 dB Typ
VSWR: 1.2:1 Max
Power Rating (CW): 700 Watts Max
Reject Band: 3.4 - 4.2 GHz
Rejection: 80 dB Min
Flanges: CPR137 (Input)
CPR137G (Output)
Weight: 1.03 lbs (0.47 Kg)
Dimensions: 5.11" x 2.69" x 1.94"
(130mm x 68mm x 49mm)
Finish: Gloss White Lacquer



MICROWAVE FILTER CO., INC.
6743 KINNE STREET, E. SYRACUSE, NY 13057
E-Mail: mfcsales@microwavefilter.com

800-448-1666 • 315-438-4700
Web: www.microwavefilter.com