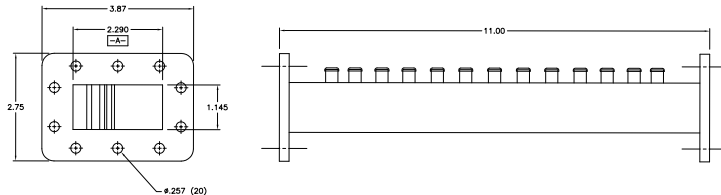




# C-Band Super Extended Receive Filter

## Model 16507

This super-extended C-band filter provides extremely low loss in the operating band and is ideal for eliminating sources of interference below 3 GHz.



### Specifications:

Passband:	3.4 - 4.2 GHz
Passband Loss:	0.1 dB Max
Passband VSWR:	1.2:1 Max
Rejection:	50 dB Min @ 3.0 GHz
Flanges:	CPR229F
Weight:	2.9 lbs (1.3 Kg)
Dimensions:	11.0" x 3.87" x 2.75" (279mm x 98mm x 70mm)
Finish:	Gloss White Lacquer

**MICROWAVE FILTER CO., INC.**  
6743 KINNE STREET, E. SYRACUSE, NY 13057  
E-Mail: [mfcsales@microwavefilter.com](mailto:mfcsales@microwavefilter.com)

800-448-1666 • 315-438-4700  
Web: [www.microwavefilter.com](http://www.microwavefilter.com)