



# Ku-Band Receive Reject Filter

## Model 18249

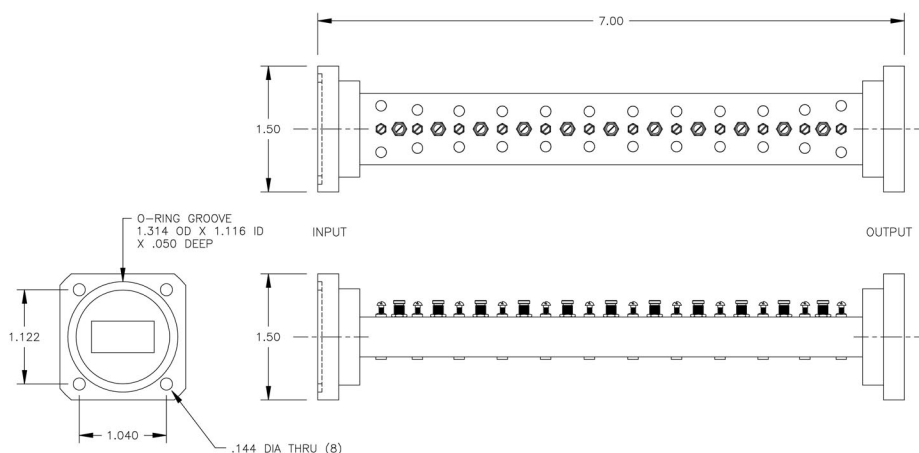
This filter isolates the transmit band from the receive band with minimal effect on transmit band performance.

### Specifications:

Passband:	12.75 - 14.50 GHz
Passband Loss:	0.3 dB Approx; 0.5 dB Max
Passband VSWR:	1.3:1 Max
Passband Power (CW):	500 Watts Max
Rejection:	75 dB Typ; 70 dB Min from 10.95 - 12.25 GHz
Flanges:	See Chart
Dimensions:	7.0" x 1.5" x 1.5" (178mm x 38mm x 38mm)
Finish:	White Lacquer

*Alternate Flange Configurations are Available Upon Request*

<u>Model</u>	<u>Input Flange</u>	<u>Output Flange</u>
18249	WR75 Cover	WR75 Cover
18249-1	WR75 Grooved	WR75 Grooved
18249-2	WR75 Cover	WR75 Grooved
18249-3	WR75 Grooved	WR75 Cover



**MICROWAVE FILTER CO., INC.**  
 6743 KINNE STREET, E. SYRACUSE, NY 13057  
 E-Mail: [mfcsales@microwavefilter.com](mailto:mfcsales@microwavefilter.com)

800-448-1666 • 315-438-4700  
 Web: [www.microwavefilter.com](http://www.microwavefilter.com)