

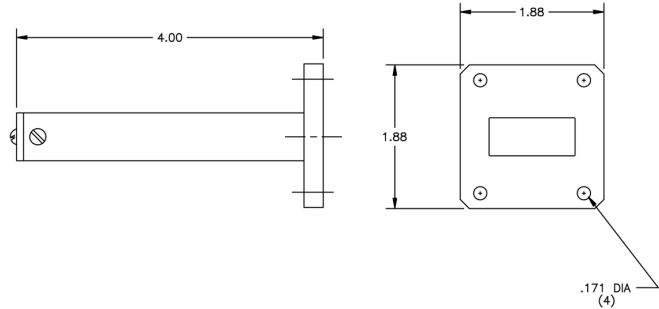


# Waveguide Termination

## WT112

### Specifications:

|                  |             |
|------------------|-------------|
| Frequency Range: | 7.05-10 GHz |
| VSWR:            | 1.05:1 Typ  |
| Power:           | 2 Watts Avg |
| Flange:          | WR112 Cover |



**MICROWAVE FILTER CO., INC.**  
6743 KINNE STREET, E. SYRACUSE, NY 13057  
E-Mail: [mfcsales@microwavefilter.com](mailto:mfcsales@microwavefilter.com)

800-448-1666 • 315-438-4700  
Web: [www.microwavefilter.com](http://www.microwavefilter.com)